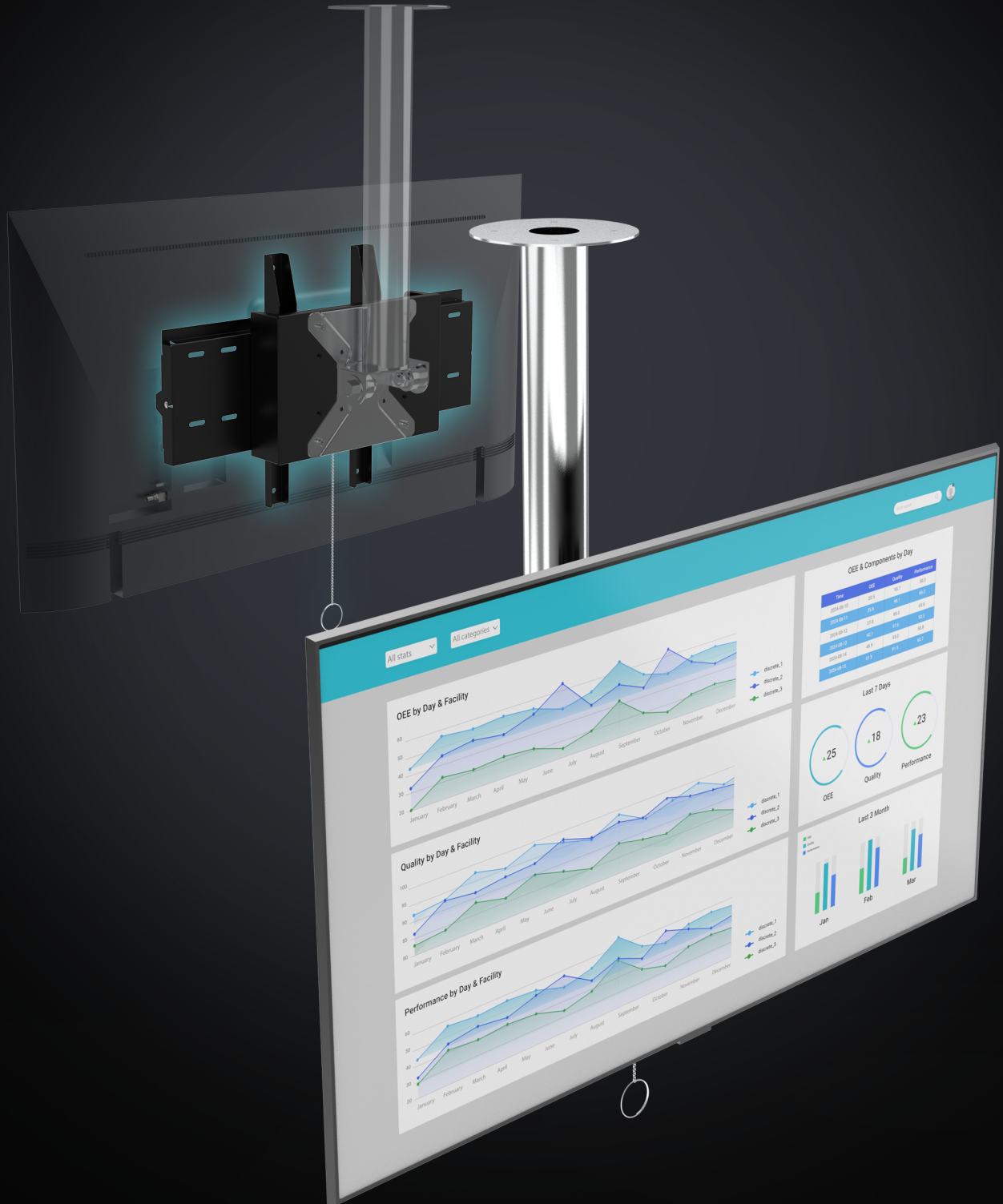


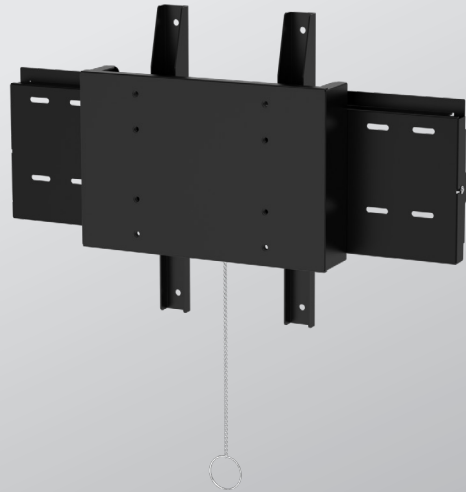
Ceiling Mount Industrial Thin Client for Large Format TV Integration

LFD-E01-003

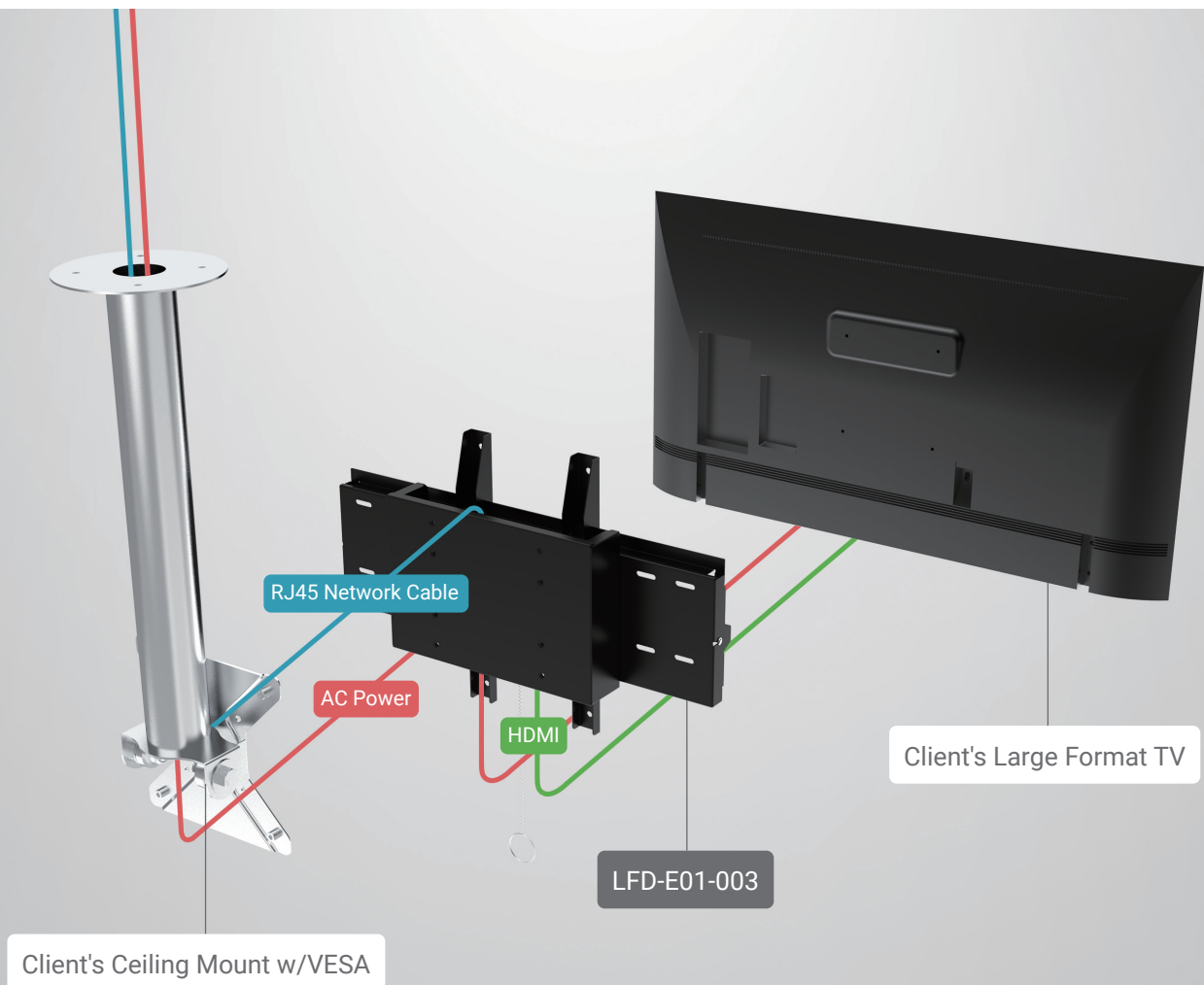


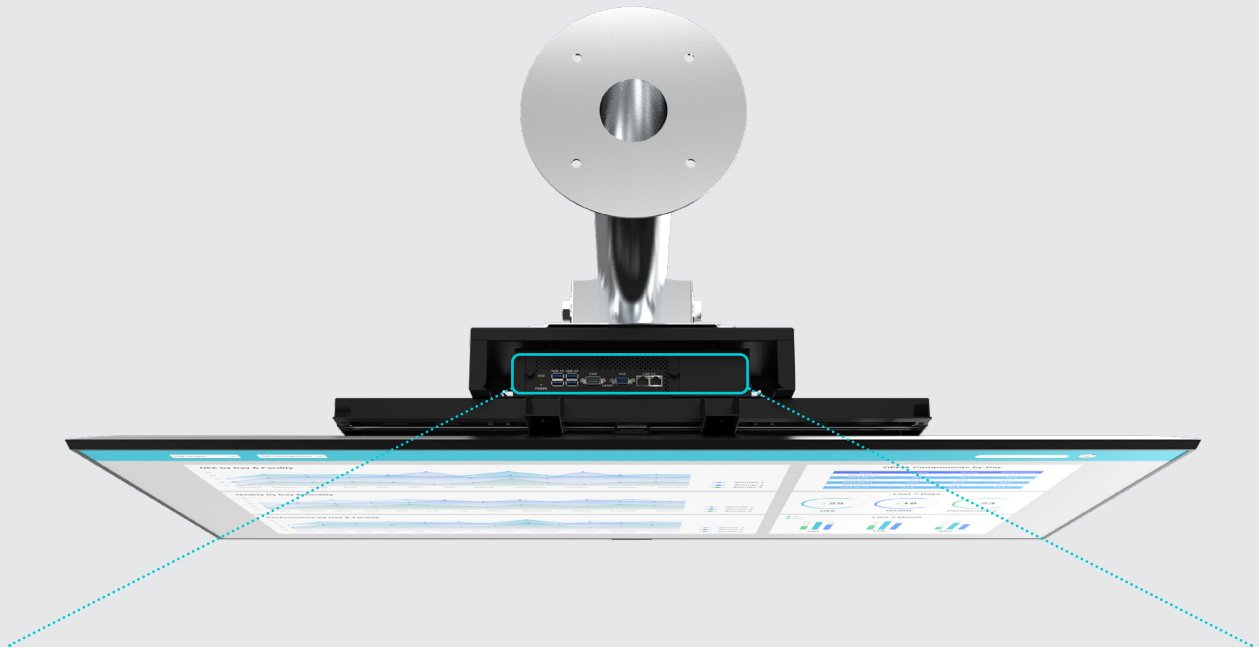
LFD-E01-003

Designed for effortless installation to integrate a large format commercial TVs.



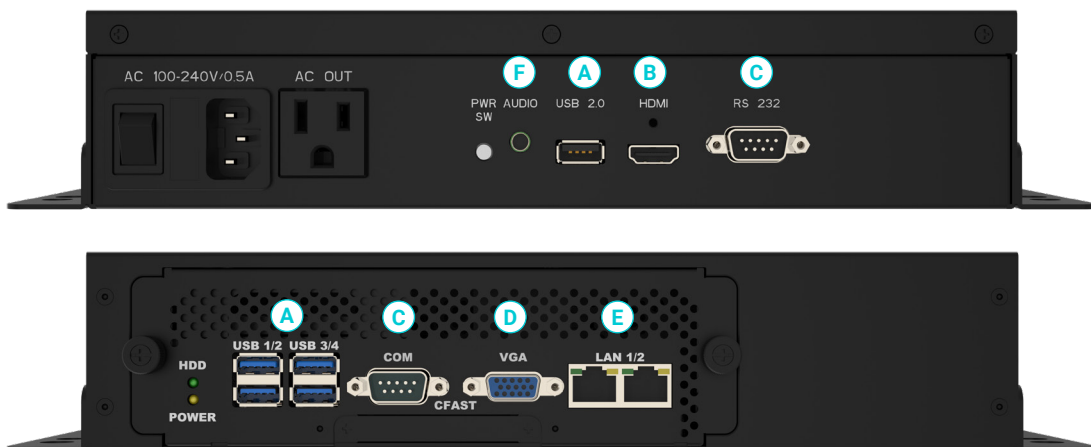
The commercial large format TVs have been widely used as KPI display due to it is readily available and wide selection of LCD screen size. But the installation and cable routing has remained quite complex. Arista designed LFD-E01-003 to address this issue and provides an effortless installation, simple cable routing and lower maintenance effort.





MiniBox-116-E01-003

- Intel Celeron J1900 @ 1.99GHz / Atom E3845 @ 1.91GHz CPU
- 4GB DDR3 SO-DIMM
- Dual Gigabit Ethernet
- 2 x RS-232/422/485 BIOS Selectable
- 5 x USB 2.0 ports
- Swappable CPU Module
- ThinManager Ready



A 5x USB 2.0 ports

B 1x HDMI

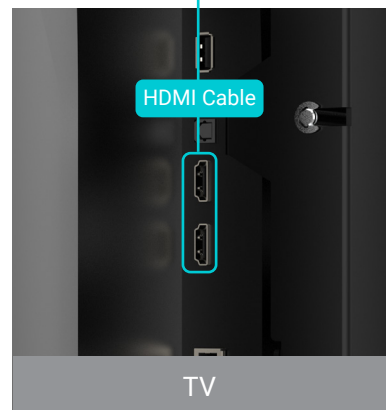
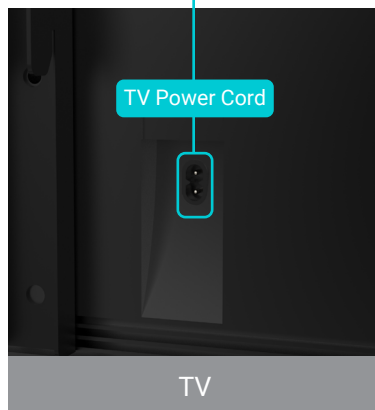
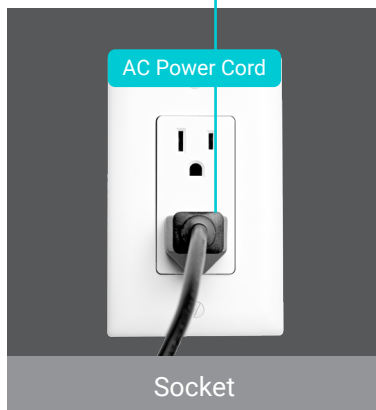
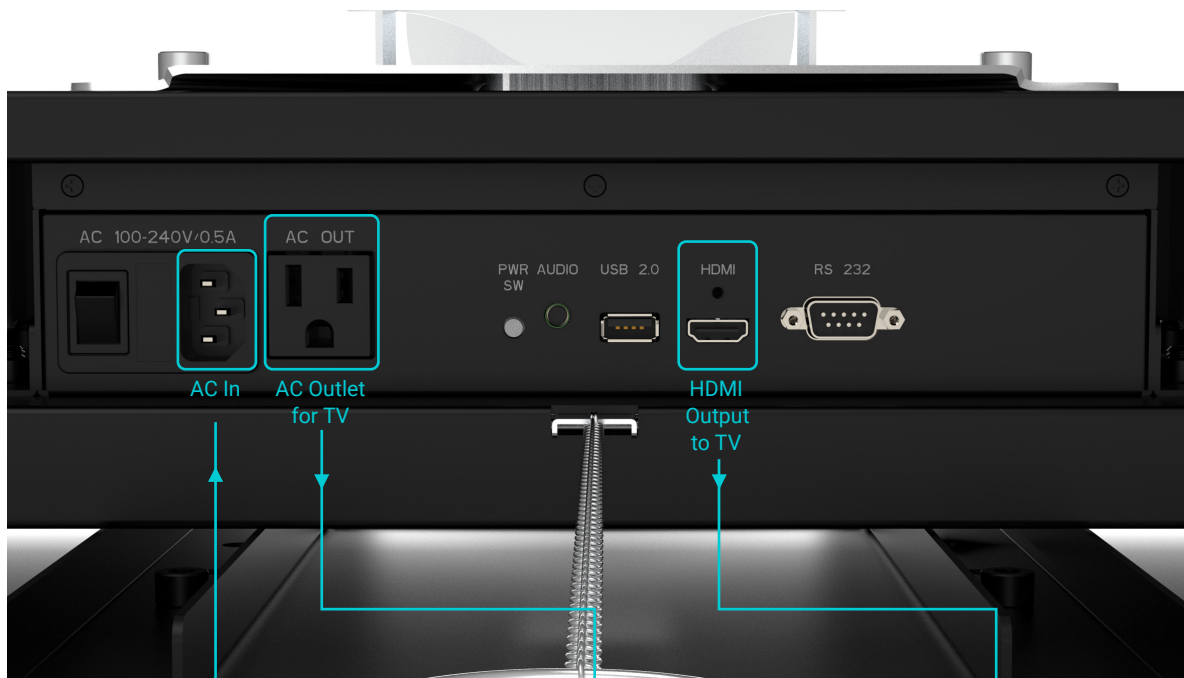
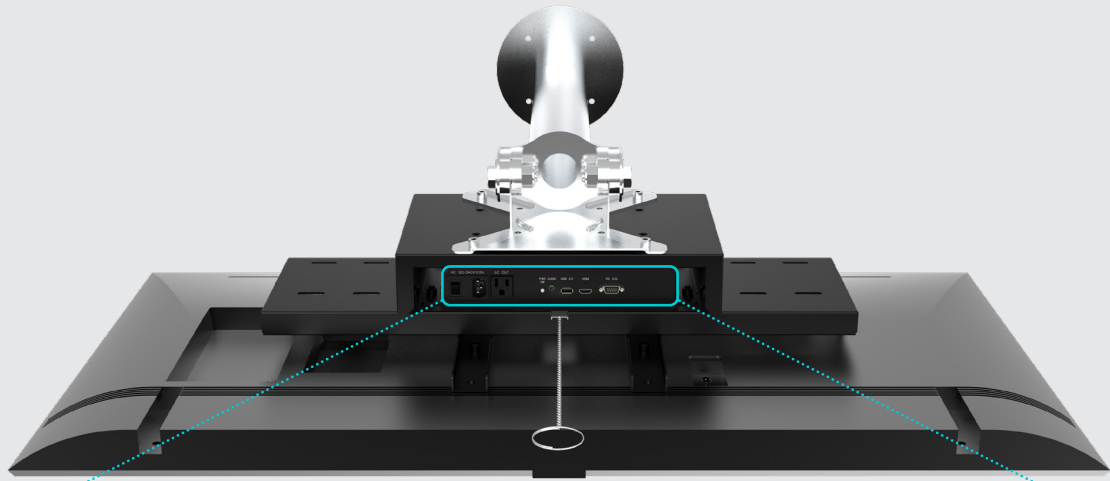
C 2x RS-232/422/485 BIOS Selectable

D 1x VGA

E 2x Gigabit LAN

F Line Out

One Power Source for Your TV and Computer



Easy Installation

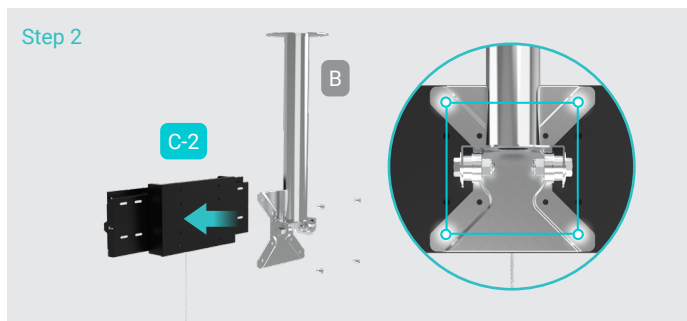
Configurations



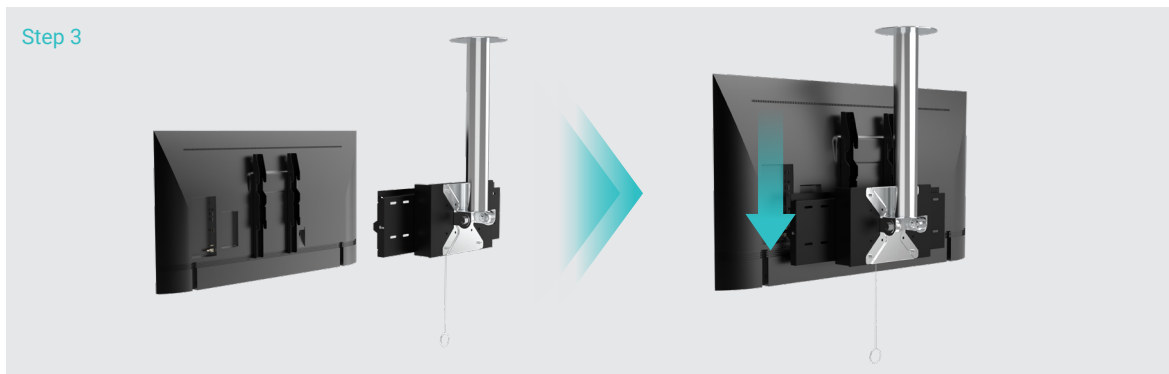
Assembly Instructions



Install the bracket on the back of the TV.



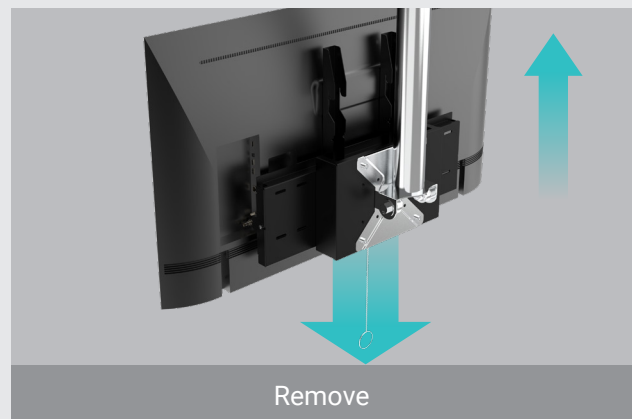
Install the ceiling mount onto the LFD-E01-03 with M8 screws (200 x 200 mm VESA)



Slide the TV bracket into the ceiling mount bracket to secure the two components together.



The removable computer for swift maintenance.



Pull down to release the lock and detach the TV.



www.aristaipc.com

ARISTA Corporation (USA)

Address: 48460 Lakeview Blvd, Fremont, CA 94538

Phone: +1-510-226-1800

eFax: 510-405-8437

Email: sales@goarista.com